



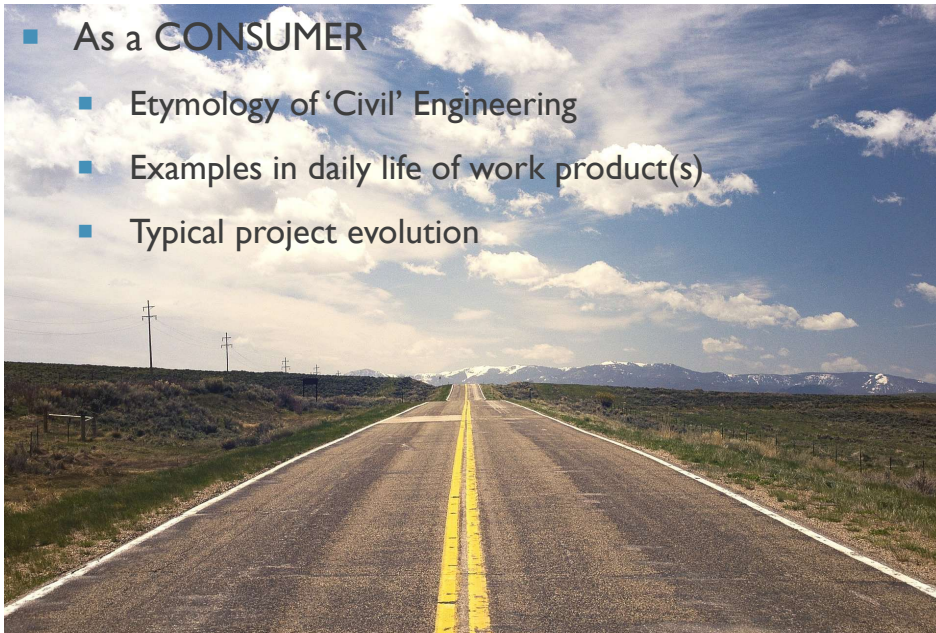
CIVIL ENGINEERING

A DISCIPLINE THAT TOUCHES EVERYTHING YOU DO EVERY DAY

AGENDA

- As a CONSUMER

- Etymology of 'Civil' Engineering
- Examples in daily life of work product(s)
- Typical project evolution



- As an ADVOCATE

- Message to your students
- Cooperation with civil 'servants'
- Resources for the curious





“I did then what I knew how to do. Now that I know better, I do better.”

~MAYA ANGELOU

ANNA S. PEPPER, E.I., ENV SP

■ Education

- Barnes Business College – Denver, CO
- University of Central Florida – Orlando, FL
 - Bachelor of Science – Civil Engineering (May 2010 – At 40 years old)
- Miami University – Oxford, OH
 - Master of Arts – Biology (December 2019)

■ Experience

- Controller
- Sales – SE U.S.A.
- Project Engineer – Worked and lived in CA, CO, PA, FL, and TX
- **Volunteer work** – Water project in Haiti; Ongoing support for Florida Native Plant Society (FNPS)

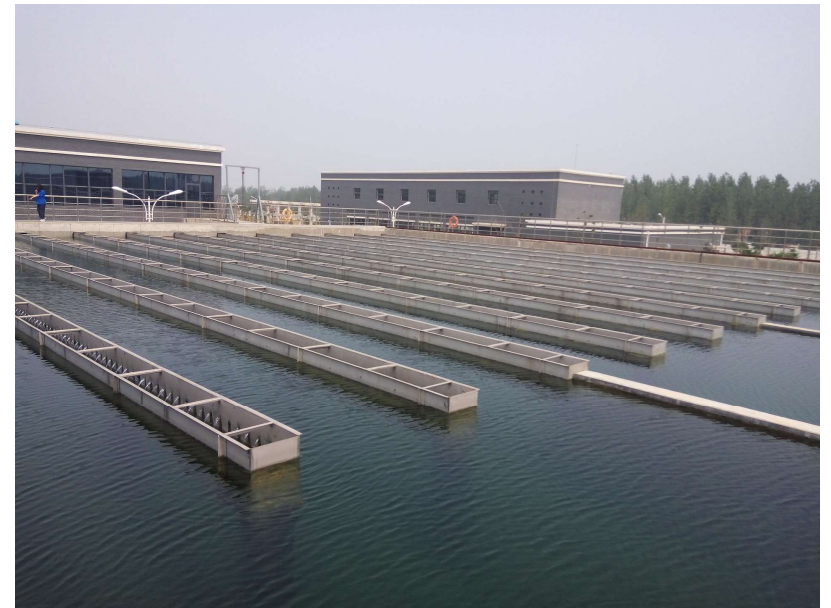
CONSUMER

- Etymology of 'Civil' Engineering



CONSUMER

- Examples in daily life of work product(s)



CONSUMER

<https://youtu.be/eyf-QZzSiug>



CONSUMER

- Typical project evolution
 - Public Advertisement
 - Design
 - Construction
 - Maintenance
 - Demolition or replacement
 - Repeat



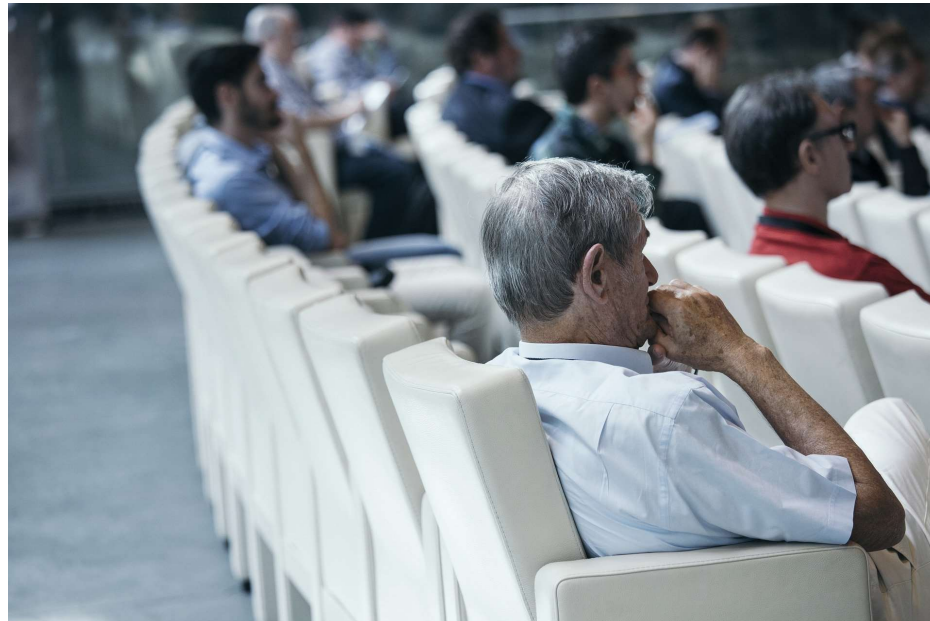
ADVOCATE

- Message to your students



ADVOCATE

- Cooperation with civil 'servants'



ADVOCATE

- Resources for the curious
 - Orange County – Citizen Planner Academy
 - <https://www.orangecountyfl.net/NeighborsHousing/CPA.aspx>
 - City of Orlando – Citizen Advisory Boards
 - <https://www.orlando.gov/Our-Government/Records-and-Documents/Citizen-Advisory-Boards>
 - Florida Department of Transportation (FDOT) – Public Meetings
 - <http://fdotwp1.dot.state.fl.us/publicsyndication/publicmeetings.aspx>
 - East Central Florida Regional Planning Council – Meetings
 - <https://www.ecfrpc.org/council>
 - Interesting Engineering YouTube Channel - <https://www.youtube.com/channel/UCEuiOszNd6msGgqsD0f9YAQ/feed>
 - Envision I-4 Ultimate Platinum: <https://sustainableinfrastructure.org/project-awards/highway/>



THANK YOU

PLEASE CONNECT ON
LINKEDIN:

[HTTPS://WWW.LINKEDIN.COM/
IN/ANNAPEPPER](https://www.linkedin.com/in/anna-pepper)